

Institutional IP Policy in the Knowledge Economy

Mr. Michael Mbogoro

Head - Technology Transfer Section

IP for Innovators Department

IP for Ecosystems Sector



The rise of the Knowledge Economy – Tangible to intangible

- Knowledge and ideas now drive economic and social value
- Research institutions are key national innovation assets
- IP Policy is key to unlocking impact

“In 1975, 17% of S&P500 company value was intangible; in 2020, it was over 90%”

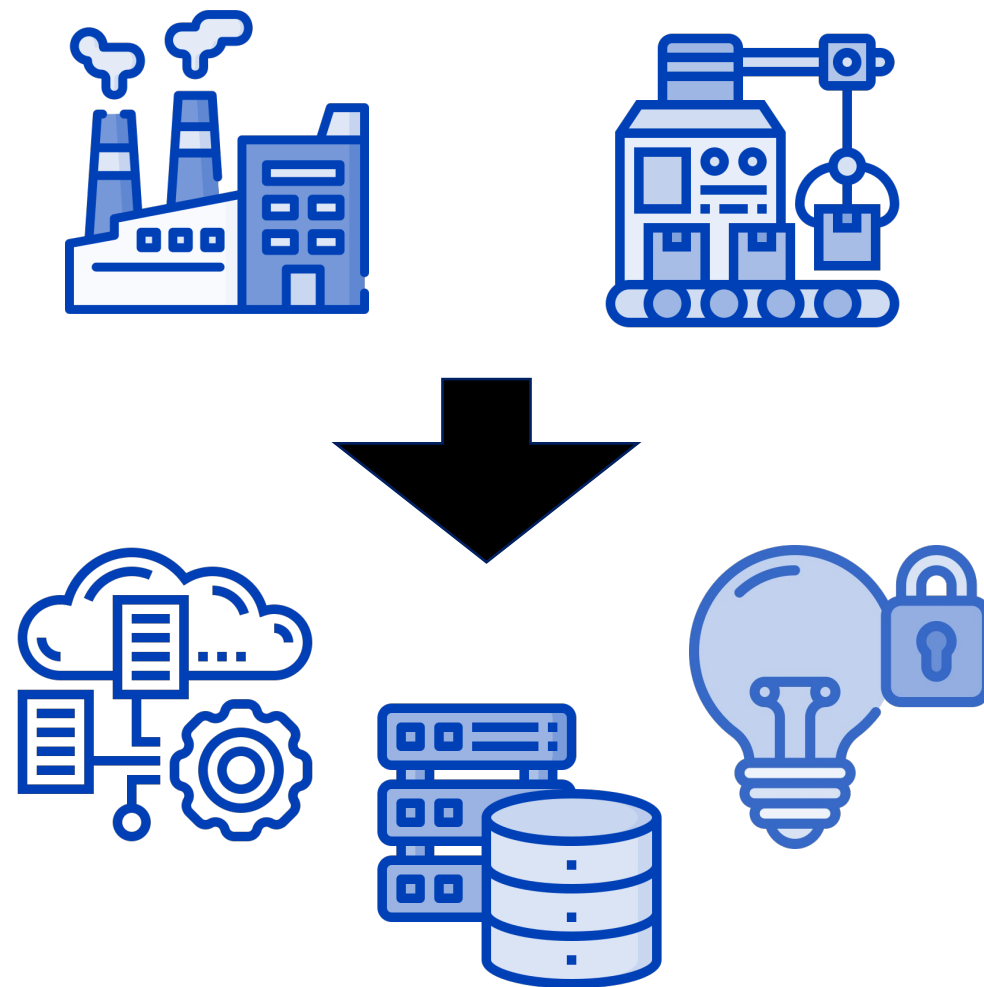


Image source: Flaticon

High expectations on Public Research Institutions

- More expected from research institutions than ever before
- Rising demand for measurable outputs and impact
- Partnerships carry reputational and legal risk without clear policy

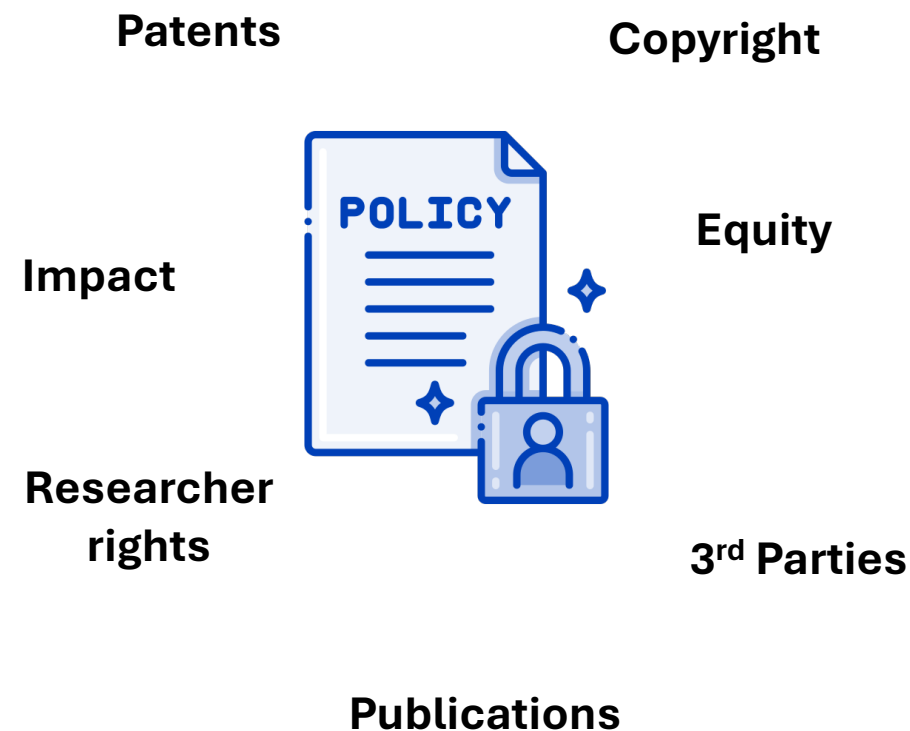
Outputs | Accountability | Impact

Image source: [Markus Distelrath](#) from [Pixabay](#)



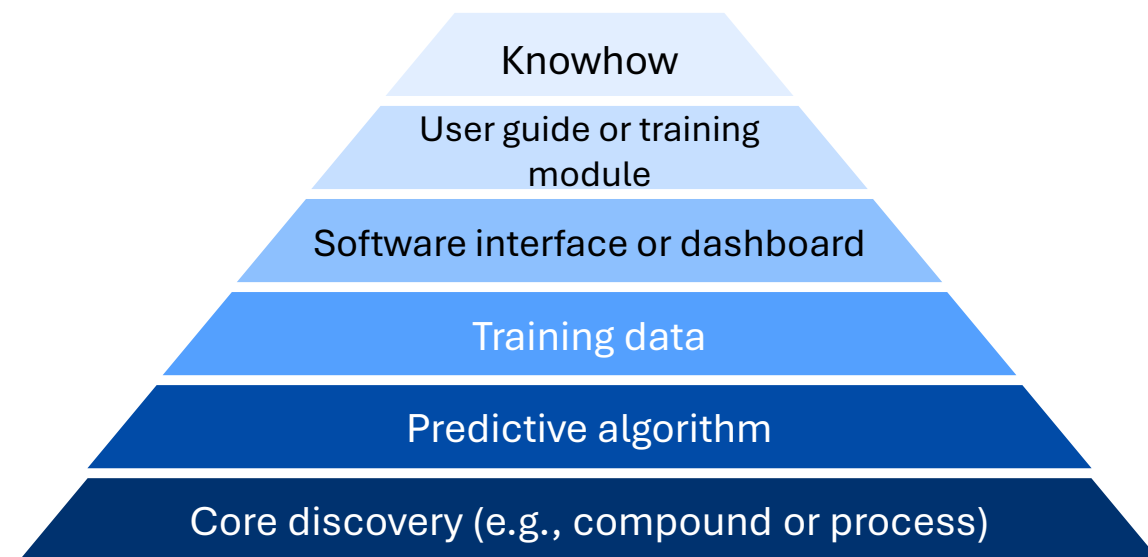
Defining Institutional IP Policy

- Defines ownership, responsibilities, and rights over research outputs
- Clarifies benefit-sharing, disclosure, and use of third-party IP
- Sets the rules for partnerships, spinouts, and publishing
- Reduces risk and enables aligned decision-making



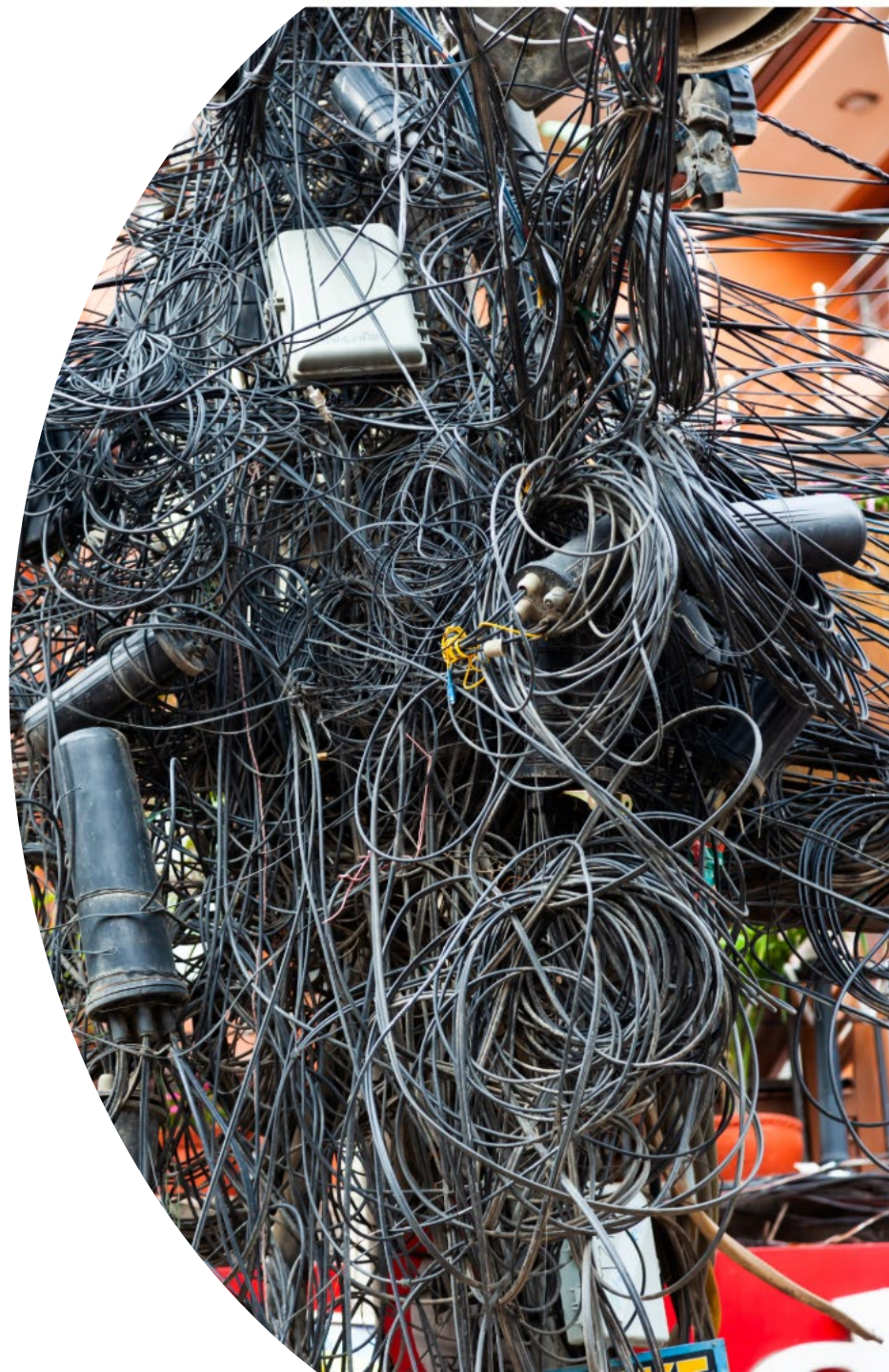
Modern Research Outputs: Why IP Policy Must Evolve

- Research now produces multi-layered, hybrid outputs
- Includes software, data, interfaces, and creative works
- Different components are governed by different IP rules
- Policy must address integration as well as protection



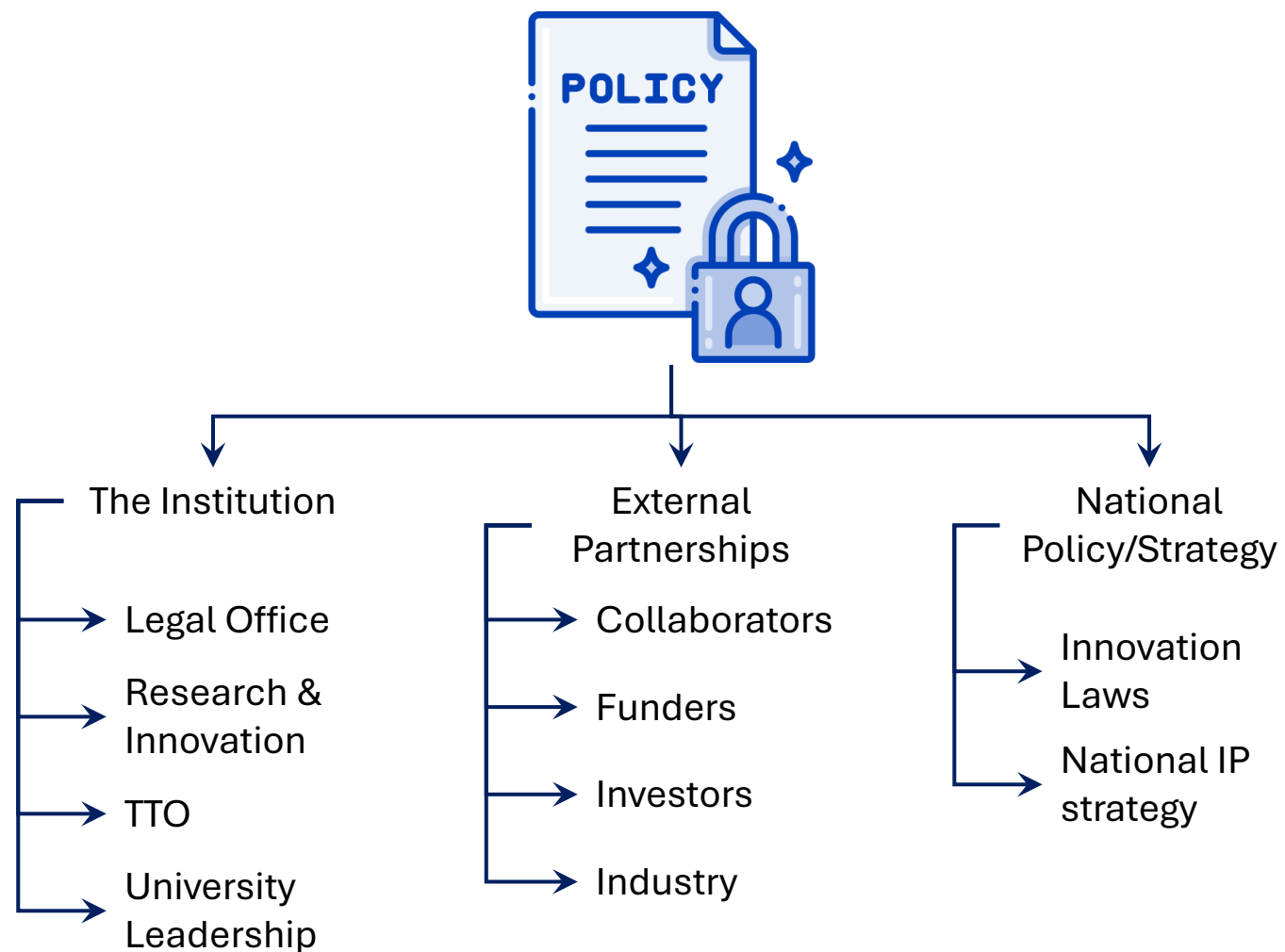
Complexity Requires Clarity

- Multi-component outputs introduce legal and procedural complexity
- Contributors vary across assets , not always the same inventors or authors
- Licensing and benefit-sharing must adapt to reflect layered structures



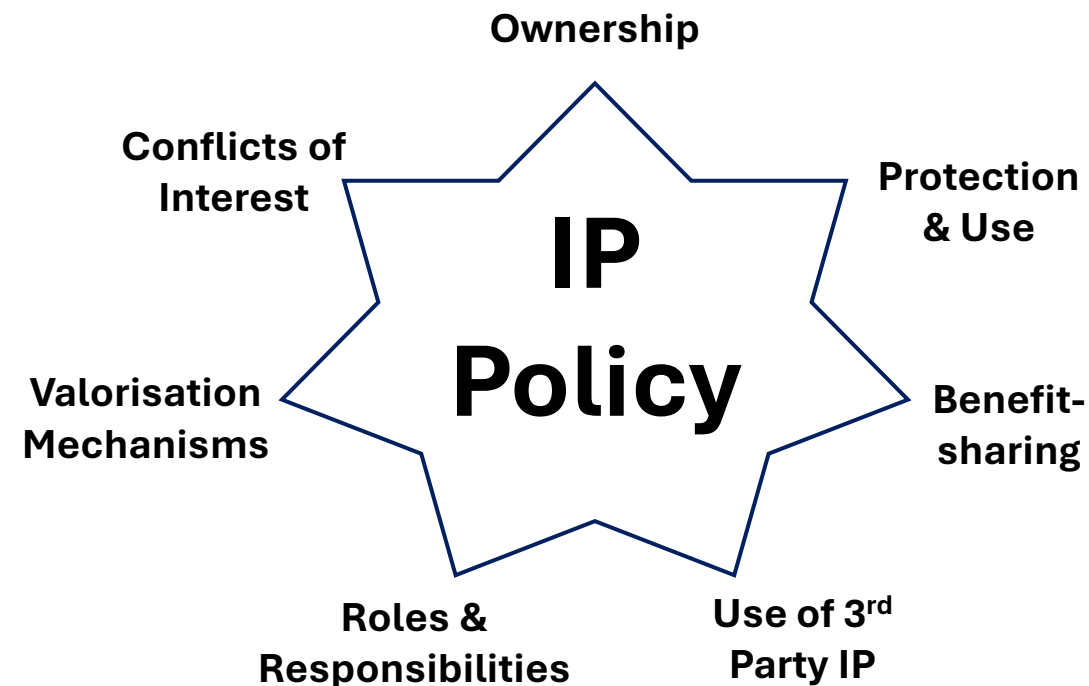
IP Policy as a Strategic Asset

- Aligns internal systems and roles
- Enables confident, ethical external engagement
- Connects institutional goals with national innovation priorities



Building a fit-for-purpose IP policy

- Clarifies ownership and rights to IP
- Defines disclosure and assessment procedures
- Mechanisms for protection and commercialisation
- Addresses benefit-sharing, and third-party use
- Outlines institutional roles and conflict of interest rules



Stakeholder Alignment in Practice – One policy, Many users

- Researchers and students need guidance and protection
- TTOs and legal teams require clear mandates
- Partners seek consistent, fair terms
- Institutional leadership needs alignment across functions

Image source: Eugenio Cuppone from pixabay



WIPO's Role and Institutional Support Tools

- Step-by-step toolkit with templates and guidance
- National model policies adaptable to local law
- Global database of real institutional policies
- Capacity-building and mentoring support

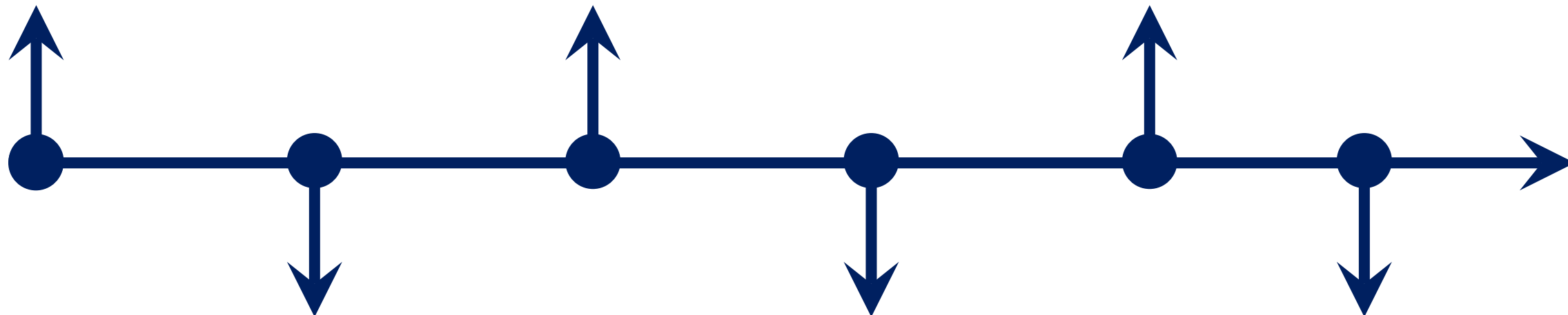


What Comes Next – Deeper dive into IP policy practice

Session 1: Institutional IP
Policy in the Knowledge
Economy

Session 3: Copyright in
research and education

Session 5: Evolving policy
trends and challenges



Session 2: How to
use the WIPO Toolkit

Session 4: Recognising
and rewarding
innovation contributors

Session 6: Comparative
regional experiences



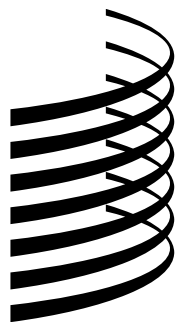
Looking Inward, Looking Ahead

Is your institution's IP policy fit for purpose?



Q&A

techtransfer@wipo.int



WIPO

WORLD
INTELLECTUAL PROPERTY
ORGANIZATION